

# Epson Stylus® Pro WT7900

REDEFINING THE FUTURE OF PRINTING

EPSON

EPSON  
Epson Stylus Pro WT7900





Actual prototypes printed on the Epson Stylus Pro WT7900 using Epson ClearProof and MetallicProof film

## Seeing is Believing.

Over the past decade, Epson has innovated many aspects of commercial proofing on paper. The result? More of today's most successful commercial printers rely on Epson for their proofing requirements than any other. So, when we decided to develop an all-new contract-quality proofing system for the unique requirements of flexographic and gravure printing — we had a lot to live up to.

### Introducing the Epson Stylus Pro WT7900 Printer.

Designed specifically for proofing flexographic and gravure print jobs that require the color white, the Epson Stylus Pro WT7900 incorporates our

latest achievements in high-resolution ink jet technology — including our breakthrough Epson UltraChrome® HDR White Ink.

Epson UltraChrome HDR White Ink introduces an all-new Organic Hollow Resin Particle Technology, which forces light to randomly scatter, producing the illusion of seeing the color white.

This innovative way to produce the color white yields an amazing white ink density, enables custom white color toning, and provides professional short-term color stability for mission-critical color proofing on a range of new substrates including ink jet coated transparent and metallic films.

And unlike traditional white ink chemistry, Epson UltraChrome HDR White Ink is a safer, water-based resin particle — void of any known carcinogens.

Capable of printing directly on both ink jet coated clear and metallic films, in roll or cut sheet, up to 24 inches wide, the Epson Stylus Pro WT7900 can proof virtually any size print job thrown at it. Whether you're creating contract proofs of various packaging products requiring a clear or metallic base, or producing color accurate packaging mock-ups or prototypes, the Epson Stylus Pro WT7900 can easily proof your most difficult flexographic and gravure print jobs.

With every new introduction of an Epson Stylus Pro printer, we continue to innovate and refine the overall experience. With the introduction of our latest Epson Stylus Pro WT7900 printer, Epson is once again redefining what's possible.

**Welcome to a new generation of package proofing.**

Epson MetallicProof™ Silver Film



Epson ClearProof™ Film

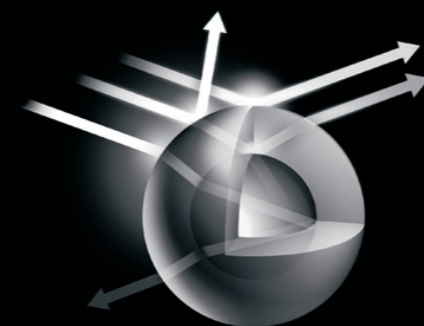


## Epson UltraChrome HDR White Ink

### The World's First Aqueous-Based White Ink Technology

- New Clear Organic Hollow Resin Particle Technology allows light to randomly scatter — creating the illusion of white
- Extremely high white density with complete density control
- Color-tone of white can be fully controlled to better match the white ink used on press
- Safer, water-based chemistry — no known carcinogens
- Unique High Dynamic Range (HDR) pigments, featuring nine-color printing system including both Orange and Green inks, for an extremely wide color gamut
- Outstanding short-term color stability for mission-critical proofing applications
- Extreme black density for virtually any flexographic or gravure printing product

### Scattering Light Creates the Illusion of White



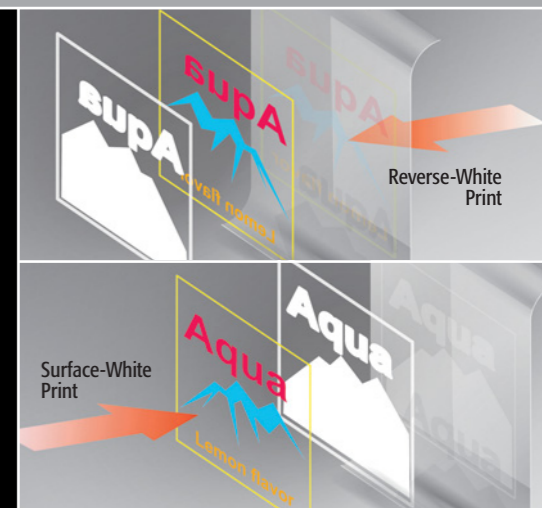
## Reverse-White and Surface-White Print Modes

### Reverse-White Print Mode

- The most common use of printing the color white on press — in which all color is applied first, followed by white
- Produces extremely vivid and clear color with the printer's widest possible color gamut
- When using clear films, the proof is viewed from behind or on the "reverse" side of the print — similar to the actual press run

### Surface-White Print Mode

- Used for many packaging products — including those requiring metallics
- The color white is printed first, followed by all other colors
- Proofs are viewed on the surface of the media — just like on normal papers



## Advanced Print Head Technology

### High-Precision Ten-Channel Epson MicroPiezo® TFP™ Print Head

- Thin Film Piezo (TFP) print head design capable of handling ten separate ink channels
- One-inch wide, high performance print head with 360 nozzles per channel
- Supports both the Reverse and Surface white printing press methods
- Capable of printing both color and white in the same pass for perfect registration
- Auto-cleaning system for virtually maintenance-free printing
- Low vibration meniscus control for highly accurate dot shape and placement
- All-new ink repelling coating for dramatically reduced nozzle clogging
- Produces variable-sized droplets as small as 3.5 picoliters to greatly decrease print times while optimizing color accuracy and transitions

### PreciseColor™ Manufacturing

- In order to ensure consistent printing between multiple Epson Stylus Pro printers of the same model, Epson has refined the manufacturing process to include colorimetric calibration. Eliminating the need for internal calibration devices, this system evaluates and adjusts each printer's performance at the manufacturing stage, ensuring consistent color output from printer to printer and print to print

### Automatic Nozzle Verification, Cleaning and Print Head Alignment

- Embedded sensors quickly verify nozzle firing status without using media and if cleaning is required, will automatically clean the print head
- Built-in sensor performs highly precise print head alignments of all color channels

## Next-Generation Print Engine Technology

### Professional Media Handling

- Compatible with ink jet coated clear and metallic films, in roll or cut sheet, up to 24 inches wide
- Accurate loading of cut-sheet media up to 1.5 mm thick posterboard
- All media is front-loaded via a unique straight-through media path
- Newly-designed Film Output Bin safely captures prints face-up, up to 24" x 36"

### ePlaten™ Media Loading Technology

- Accurate automatic media loading, movement, skew adjustment, and tracking
- Electronically controlled roll media back tension
- Automatic roll media rewind upon media release
- Simplifies the overall roll and cut-sheet media loading process

### Spindle-Free Roll Media Loading

- User-adjustable roll media adapters accept either 2- or 3-inch media cores
- Simple tension lever ensures quick and secure media core loading
- Designed with Epson ePlaten Technology for highly accurate roll media usage

### Roll Media Length Tracking and Identification System

- Realtime automatic remaining roll media length counter
- Auto bar code tagging of remaining roll media information for faster reloading
- Very useful for tracking partially used media rolls
- Near-end media warning eliminates waste from jobs too large for remaining media amount

### High Performance Rotary Cutting System

- Durable rotary cutter, designed to be virtually maintenance free
- High performance cutting speeds — cuts 24-inch wide rolls in less than two seconds
- Off-carriage cutting system eliminates media dust within critical components

### Epson Intelligent High-Capacity Ink System

- Pressurized ink cartridge technology ensures reliable ink delivery at all print speeds, while dramatically reducing the physical size of the ink cartridges
- Eleven individual ink cartridges — most are available in 150 ml, 350 ml and 700 ml fill capacities<sup>1</sup>
- On-the-fly ink cartridge replacement for increased productivity
- Mix and match across all three ink cartridge sizes
- Built-in, lower-cost, Cleaning Cartridges for automatic print head maintenance

### Easy-to-Use Front Control Panel

- High-resolution, 2.5-inch color, LCD for improved viewing of printer status
- Simple button layout for all navigation and basic printer functions

### Superior Connectivity

- Standard connectivity includes one USB 2.0 and one 10/100 BaseT Ethernet port
- Supported by most leading third-party software RIPs and workflows including those from CGS, EFI, Esko Artwork, GMG and Kodak
- Visit your local Epson reseller for other RIP workflows available

### myEpsonPrinter.com<sup>SM2</sup>

- Advanced web-based printer information and management system
- Automatically tracks consumables usage and print job information — regardless of location
- Provides real-time cost-per-print estimates and print-job-run information
- Create various reports using actual print job information
- Provides remote printer monitoring and alert capability
- Secure information management using sophisticated encryption technologies
- True web-based, fleet-wide printer management via secure, web-based account

### World-Class Service and Support

- Includes one year of limited warranty coverage under the Epson Preferred<sup>SM</sup> Protection Plan with toll-free telephone support available Monday through Friday and usually next-business-day, on-site service
- Optional one- or two-year Epson Preferred Plus service plans available

<sup>1</sup> White ink available in 150 ml or 350 ml only. Cleaning Cartridges available in 150 ml only.  
<sup>2</sup> Visit [www.myepprinter.com](http://www.myepprinter.com) for details.



Epson Stylus Pro WT7900  
Shown with included film output bin.

#### MicroPiezo TFP Print Head

Exotic Thin Film Piezo print head technology. Extreme printing performance and dot placement accuracy. Capable of printing both color and white at the same time.

#### Epson ClearProof Film

New ultra-clear film with virtually instant-dry capability. Capable of high ink densities for an extremely wide color gamut — perfect for various flexo and gravure print jobs.

#### Epson MetallicProof Silver Film

A breakthrough aqueous coated silver film. Virtually any metallic color can be simulated using this silver base film and Epson UltraChrome HDR White Inks.

## High Performance Print Engine Speeds

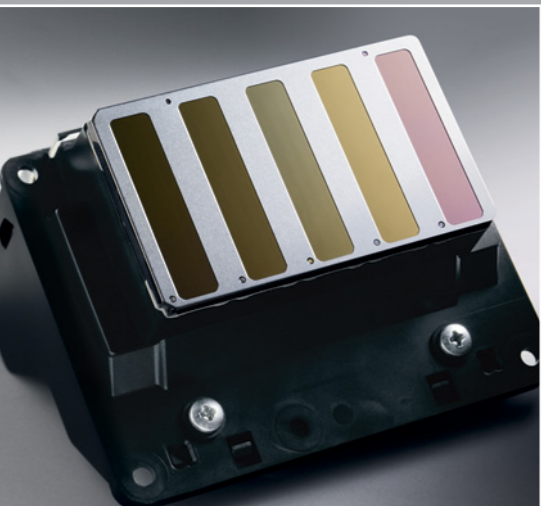
Utilizing our latest print head technology, the Epson Stylus Pro WT7900 is faster than most traditional methods of creating similar contract-quality proofs on clear or metallic films.<sup>A</sup>

Print Mode	Typical 24" x 20" Flexo or Gravure Proof
1440 x 720 dpi	23:00 min:sec
1440 x 1440 dpi	27:16 min:sec

Print times are when printing uni-directional on Epson ClearProof Film.

## Supported by the World's Leading Third-Party Workflows

Epson worked closely with the world's leading RIP providers, so whether you're using CGS, EFI, Esko Artwork, GMG, or Kodak, you can be assured of complete compatibility within your existing workflow.



# Epson Stylus Pro WT7900 Print Engine Specifications

## Printing Technology

Advanced MicroPiezo TFP print head with ink repelling coating technology  
 10-channel, drop-on-demand, ink jet print head  
 11-cartridge (C, O, Y, Lc, White, Cleaning, VM, Cleaning, G, PK, VLM)  
 Auto head alignment and cleaning technology  
 Epson UltraChrome HDR White Ink technology  
 Professional-level aqueous-based ink  
 Clear Organic Hollow Resin Particle Technology

## Nozzle Configuration

Color and Monochrome 360 nozzles x 10

## Droplet Technology

Smallest droplet size 3.5 picoliters  
 Variable Droplet Technology produces up to three different droplet sizes per print line.

## Resolution/Print Engine Speed<sup>a</sup>

1440 x 720 dpi 23:00 min:sec  
 1440 x 1440 dpi 27:16 min:sec  
 Print times are when printing uni-directional on Epson ClearProof Film.

## Acoustic Noise Level

Approximately 50 dB(A) according to ISO 7779

## RIP Workflow Support

A RIP is required for this printer.

The following are recommended by Epson America:  
 CGS, EFI, Esko Artwork, GMG and Kodak.  
 Visit an authorized Epson reseller for the latest RIP offerings.

## Printer Interfaces

Includes as standard one Hi-Speed USB 2.0 and one Ethernet port (10/100 Base-T)

## Dimensions

54" (W) x 27" (D) x 48" (H)  
 Weight: 187 lb  
 Dimensions and weight include printer stand  
 Minimum Space Requirement for Printer with Film Output Bin: 5' x 5'

## Printable Area

Maximum paper width 24"  
 Left and right margins 0 to 3 mm each (0.24" total)  
 Maximum printable length Limited by application, OS, and RIP used  
 Minimum paper width 210 mm (8.27")

## Media Handling

Media input Single roll up to 24" wide  
 Cut-sheet size Up to 24" wide media (auto-loading)  
 Media core compatibility User-adjustable roll media adapters accept either 2" or 3" media cores  
 Max. roll media diameter 6" (when using a 3" core)  
 Media weight 12 lb bond, up to 1.5 mm posterboard  
 Minimum sheet size 8.27" x 11"  
 Built-in media cutter Rotary cutting, automatic and manual

## Epson Intelligent Pressurized Ink Cartridges<sup>b</sup>

Starter cartridge fill volume 110 ml x 11 total cartridges (used for initial fill at setup)  
 Replacement cartridge fill volume<sup>c</sup> 150 ml, 350 ml or 700 ml, each color x 11 cartridges total  
 Ink cartridge shelf life (recommended) 2 years from printed production date or 6 months after open

## Epson PreciseColor Manufacturing

In order to ensure consistent printing between multiple Epson Stylus Pro printers of the same model, Epson has refined the manufacturing process to include colorimetric calibration. This process evaluates and adjusts each printer's performance at the manufacturing stage, ensuring consistent color output from printer-to-printer and print-to-print.

## Product

Epson Stylus Pro WT7900 Printer

## Part Numbers

SPWT7900

## Accessories

Additional Roll Media Adapters C12C811241  
 Replacement Printer Cutter Blade C12C815331  
 Replacement Ink Maintenance Tank C12C890191

## Extended Service Programs

Additional One-year Epson Preferred Plus service EPPWT79B1  
 Additional Two-year Epson Preferred Plus service EPPWT79B2

## Epson UltraChrome HDR Ink

	(150 ml)	(350 ml)	(700 ml)
Photo Black ink cartridge	T642100	T596100	T636100
Cyan ink cartridge	T642200	T596200	T636200
Vivid Magenta ink cartridge	T642300	T596300	T636300
Yellow ink cartridge	T642400	T596400	T636400
Light Cyan ink cartridge	T642500	T596500	T636500
Vivid Light Magenta ink cartridge	T642600	T596600	T636600
Orange ink cartridge	T642A00	T596A00	T636A00
Green ink cartridge	T642B00	T596B00	T636B00
White ink cartridge	T642C00	T596C00	N.A.
Cleaning cartridge	T642000	N.A.	N.A.

A Based upon print engine speed only. Total throughput times depend upon front-end RIP, file size, printer resolution, ink coverage, networking, etc. Normal Mode based on 1440 x 720 dpi, when printing uni-directional on Epson ClearProof Film.

B Cartridge yields vary considerably for reasons including images printed, print settings, temperature and humidity. Yields may be lower when printing infrequently or predominantly with one ink color. A variable amount of ink remains in the cartridge after the "replace cartridge" signal. Part of the ink from the first cartridges is used for priming the printer. Ink is used for both printing and print head maintenance. All inks are used for both black and color printing. For more information about cartridges see [www.epson.com/cartridgeinfo](http://www.epson.com/cartridgeinfo)

C White ink available in 150 ml or 350 ml only.

For more details, visit our website at:  
[www.proimaging.epson.com](http://www.proimaging.epson.com)

Better Products for a Better Future™

For more information on Epson's environmental programs, go to [eco.epson.com](http://eco.epson.com)

**EPSON**  
 EXCEED YOUR VISION

Epson America, Inc.: 3840 Kilroy Airport Way, Long Beach, CA 90806

Epson Canada, Ltd.: 3771 Victoria Park Avenue, Toronto, Ontario M1W 3Z5

Internet website: [www.proimaging.epson.com](http://www.proimaging.epson.com)



Specifications and terms are subject to change without notice. Epson, Epson Stylus, Epson UltraChrome and MicroPiezo are registered trademarks, Epson Exceed Your Vision is a registered logomark and Better Products for a Better Future, ClearProof, MetallicProof and TFP are trademarks of Seiko Epson Corporation. ePlaten and PreciseColor are trademarks and Epson Preferred and myEpsonPrinter.com are service marks of Epson America, Inc. All other product and brand names are trademarks and/or registered trademarks of their respective companies. Epson disclaims any and all rights in these marks. Copyright 2010, Epson America, Inc. CPD 32284 XXK 4/10 XX